



Digital Platform Service

by Nippon Express



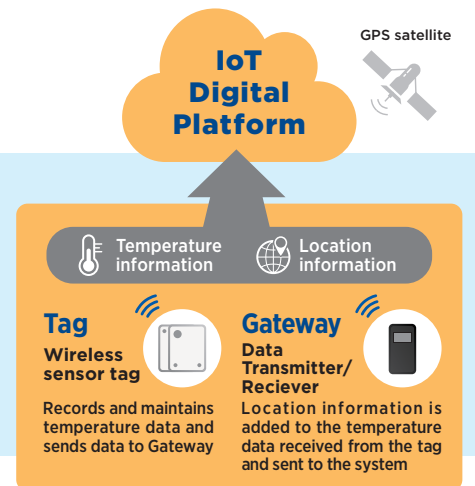
Digital × GDP

Pharmaceutical Global logistics services for safe and secure transportation

Real-time monitoring with IoT devices

Nippon Express has developed a digital platform utilizing IoT devices that connect logistics information, enable real-time monitoring and End-to-End solution. With Nippon Express' proprietary IoT devices, which are temperature calibrated, you can check detailed temperature and location information in real time on your monitor. We will provide safe and secure pharmaceutical transportation services utilizing Nippon Express locations around the world.

Achieve more advanced temperature management through proprietary IoT devices



Outline of Digital Platform Services Utilizing IoT Devices



High-quality End-to-End transportation with GDP compliance

1

Nippon Express companies are GDP compliant in major markets around the world. We respond to our customers' demands with high-quality transportation on a global End-to-End through our high-level operation system.



Consistent Pharmaceutical Temperature Management Transportation

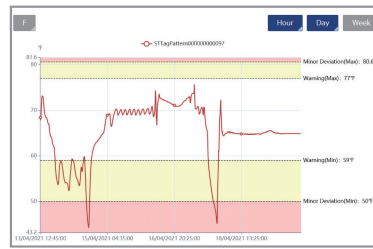


*CSV: Abbreviation for Computerized System Validation

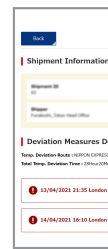
Real-time temperature monitoring services

2

You can monitor the temperature transition status during transportation in real-time. When temperature ranges exceed the reference line, alerts are sent so that operation can act swiftly to temperature deviations.

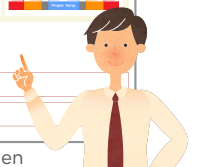


Temperature transition graph



Temperature deviation screen

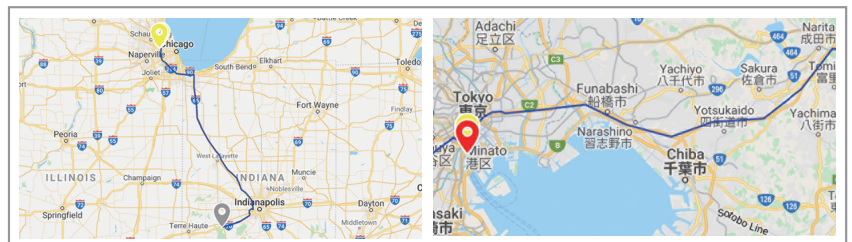
The temperature transition can be confirmed with the graph and is convenient. In addition, you can be rest assured that a temperature deviation could be prevented by setting up alerts.



Mapping location information at a glance

3

In the trace information screen, detailed location information using GPS is displayed on the map. You can check the current position in real time. If a temperature deviation occurs, it will be displayed on the Marker Pin so that the route could be avoided from next time.



Screen for Trace Information

Contact

*The current screen is under development. Actual screens may differ.